

# Command Client

## Customizable User Interface



From small standalone facilities to global enterprise applications, March Networks® **Command™ Client** provides all the features users count on to make their jobs easier and more intuitive. The sophisticated, yet simple and flexible interface helps you monitor video, audio and data in real-time. Plus, it exponentially reduces the time you spend on post-incident investigations, and allows you to deploy and maintain your surveillance infrastructure with confidence. The user interface is customizable based on job responsibility, whether it's a "live video only" guard or a super-administrator responsible for the system's health and maintenance. So users and administrators alike will be able to jump right into their daily routine, with almost no on-the-job training required.

Access and manage all of the devices on your video surveillance network via any March Networks recorder, virtual machine (VM), or any user workstation running a Windows® environment.

## Key Benefits

- ▶ **Customizable user interface based on job responsibility.** Each user sees only what's needed to perform their job, in the language of preference, dramatically reducing the learning curve and training requirements. Additionally, users can customize the system navigation using Personal folders.
- ▶ **Multiple viewing options.** View video from a single camera, or from multiple cameras in flexible grids. Play live and archived video side-by-side. Simultaneously display multiple views from the same camera for comparison. Playback and export synchronized audio and video.
- ▶ **Perform different tasks on separate monitors.** Undock workspace or dashboard tabs and "float" them to any other monitor connected to your computer.
- ▶ **Intuitive search tools.** Search for recorded video evidence using your search method of preference, including timeline, visual finder, thumbnails, motion histograms, and smart search (search for motion in specified areas of recorded video).
- ▶ **Manage and acknowledge system alarms.** Sophisticated alarm handling helps users respond immediately and more efficiently to critical situations.
- ▶ **Build, share and export cases.** Create case folders containing multiple evidence files (video, images, and notes) for export, and share those cases with other colleagues.
- ▶ **Direct connection to servers and recorders.** In the event the Command Enterprise Server is unavailable (e.g., network issue, database maintenance, etc.), Command Client can connect/authenticate directly to Command Recording Servers as well 8000 and 9000 Series Recorders.
- ▶ **Interactive mapping.** Import maps to create visual indications of where cameras and other resources are located, complete with camera PTZ functionality.
- ▶ **Powerful system administration tools.** Deploy and manage complex video surveillance systems with ease. For a more in-depth look at the intuitive system administration features, check out the [Command Enterprise brochure](#).

*View live video, access and analyze recorded video,  
and easily manage all of your alarms and  
surveillance resources with a customizable user interface*

# Spend less time searching!

A car was stolen over the weekend. It's not the Monday morning you were looking forward to.

Post-incident investigations can consume a significant portion of your work day. Command Client gives you focused tools to help you rapidly gather and retrieve evidence. Hours spent searching through video archives can be reduced to minutes, so you can find that missing car.

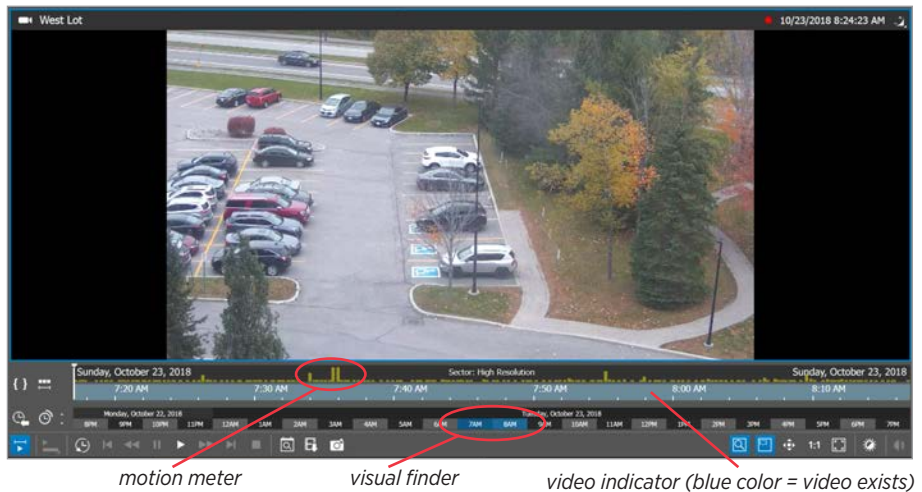
## Timeline search

Move quickly from months to minutes in your recorded video, and zero in on the exact timeframe you want to investigate. The timeline allows you to search for video from a certain date and time.

It is comprised of

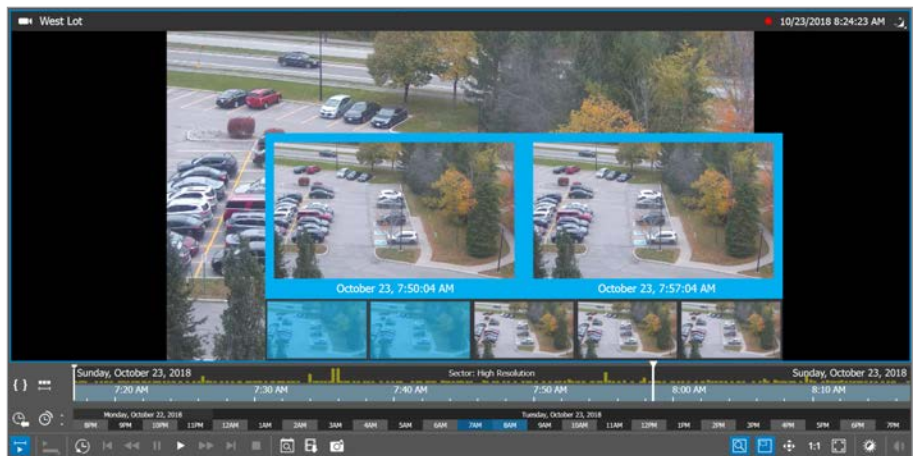
- a motion meter (which shows where motion occurred along the timeline)
- a video indicator (which shows where recorded video exists)
- a visual finder (which shows the current time period and selection from a higher level).

These interactive tools allow you to quickly navigate through recorded video, so you can easily locate your clips of interest in just a few clicks.



## Thumbnail search

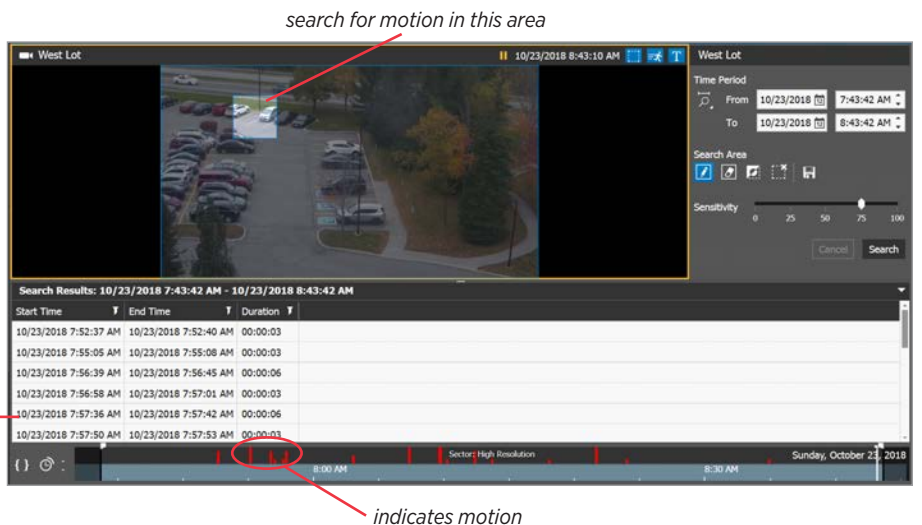
Thumbnail versions of video to help you search for specific incidents or a specific time frame in your video. Hover over a thumbnail to enlarge it so you can see the detail in the picture. Click on a thumbnail to jump to that specific time and date in the recording.



## Smart search

Search for motion in a specific area, and receive a list of all events that occurred within that area. For example, you can isolate a parking space, and review video of movement within that window, but not movement within the rest of the lot. By searching only for motion in designated areas, and within a certain time period, you will reduce the amount of non-relevant video you watch.

*search results*

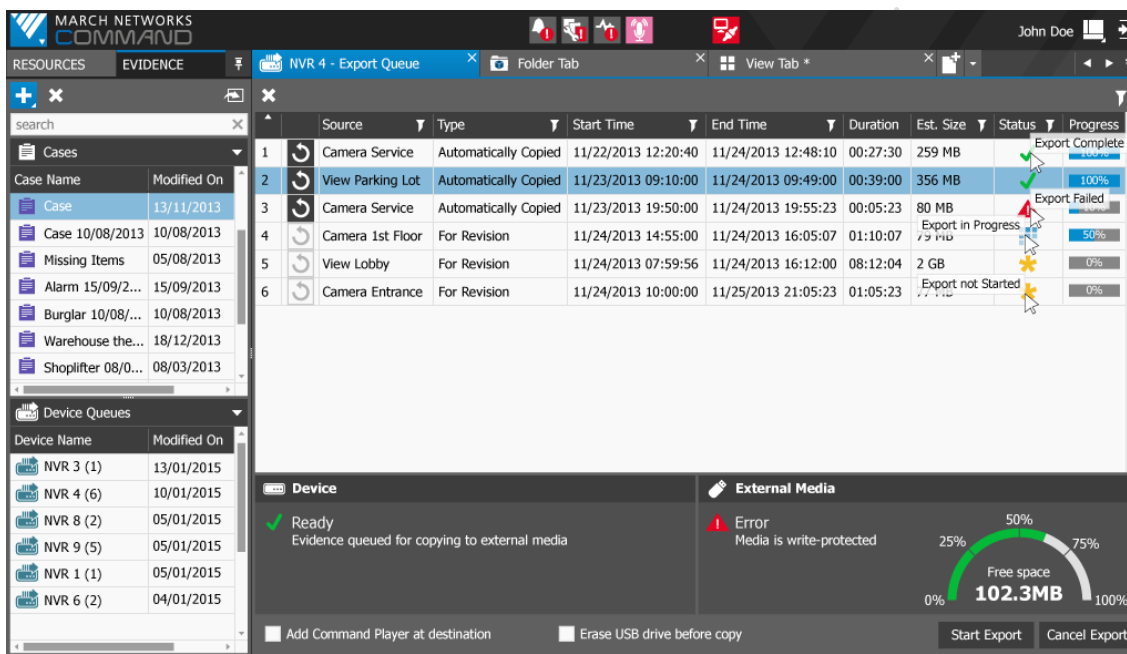


# Get the right information into the right hands

- 1 Build your case evidence.** Gone are the days where you need to sift through numerous video clips to create or review evidence on a case. With Command's Case Management tool, you can put multiple clips and images, from multiple cameras and recorders, into a single case folder that includes detailed alarm information and customized notes. Each case is compiled in Command Client, and the evidence is stored within Command Enterprise Media Archiver, so no data is being extracted or removed, no bandwidth is consumed, and the evidence remains secure.
- 2 Export your evidence.** Once your case file is complete, you can export your evidence to a .pdf, USB, file system of the PC, or the USB port of a recorder. Evidence can also be queued on recorders for local USB export; evidence can be automatically added to the queue based on the recorder's configuration, or queued up manually from a remote site.
- 3 Equip investigators with tools to review the evidence.** The exported clips, snapshots and transaction information can be reviewed with the March Networks proprietary Command Player. The player allows you to authenticate and play back recorded cases exported from Command in the proprietary Command Multimedia Evidence (.cme) file format. This file format ensures that sensitive video evidence cannot be easily shared over the Internet, and provides fast export of large archive files
- 4 Apply a disclaimer to a snapshot prior to exporting.** Add an extra layer of security by ensuring the recipient of any snapshot is aware of the proprietary nature of that snapshot. This customizable disclaimer lets the recipient know that this image was prepared for their use, and that it is being sent to them under certain conditions.

To ensure that third-party investigators or law enforcement authorities can review evidence copied to external media, the Command Player can be automatically included when evidence files are exported.

Command Player guarantees authentic, tamper-free video exports without the need to install any software or plug-ins in order to view.



Queue audio/video evidence for local export to a USB connected to a March Networks recorder

# Alarm monitoring and response made easy

Statistics indicate that it takes just 20 minutes, on average, before an operator loses focus. That's why automated alarms are so important.

Command offers sophisticated alarm monitoring to help operators respond immediately and more effectively to critical situations. Real-time processing means that several alarms coming in from different recording platforms can be handled simultaneously, with the help of pre-programmed actions for video, audio and event data. Video on different monitors, as well as spot-monitor camera sequences and email notifications to critical responders, ensure fast and appropriate responses.

## Automated alarm workflow setup

Thirty-five customizable actions allow you to configure an unlimited number of events and associated responses that will automatically provide operators with the correct procedure to follow in the event of an alarm.

You can use alarm inputs and relay outputs (displayed in the navigation tree) to manually trigger in response to critical situations. Or you can configure those inputs to initiate events automatically on any other client application.

All alarm activity is recorded in the software's innovative, interactive database, providing your organization with a comprehensive record complete with associated video and operator actions.

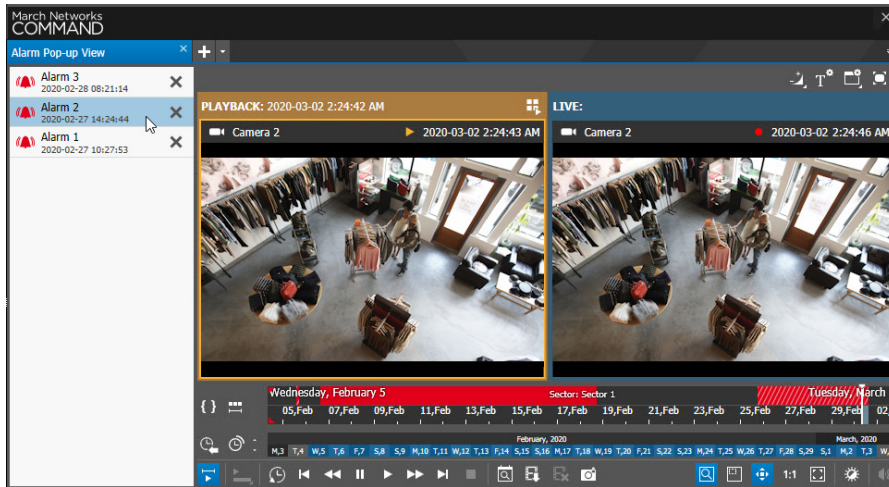
## Alarm pop-up

High priority alarms can be configured to automatically display video when the alarm is triggered, either in the Command Client workspace or in a separate alarm pop-up window. You can configure it to display live video, play back video from the time of the alarm, or both.

## Alarm monitoring made easy

Use Command's alarm inbox to:

- View live alarm video, archived video, or a combination of both
- Choose from 5 unique sounds for different types of alarms
- Display a visual indication for incoming alarms
- Review details about an alarm's type and severity
- Enter additional details about an alarm — e.g., who was involved, property incidents, and customized notes — all of which will be automatically transferred to the corresponding case file



*For recommended Command Client software system requirements, please visit [marchnetworks.com/system-requirements/](https://marchnetworks.com/system-requirements/)*